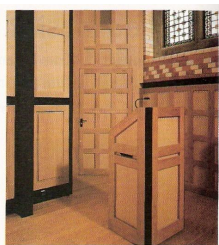


*the architects' journal*, 8 May 1997



Left: a space for music, drama and lectures. The grand piano folds away into a storeroom at the base of the new oak partition behind the stage. Above: laptop computers can be plugged into the highly serviced lectern which is connected to a projection booth, giving control of slide projection, sound effects and lighting

#### CREDITS

**CLIENT**  
The Master and Fellows of Gonville and Caius College, Cambridge

**ARCHITECT**  
Donald Insall Associates:  
Robert Dunton, Tim Ellis, Sarah Glynn

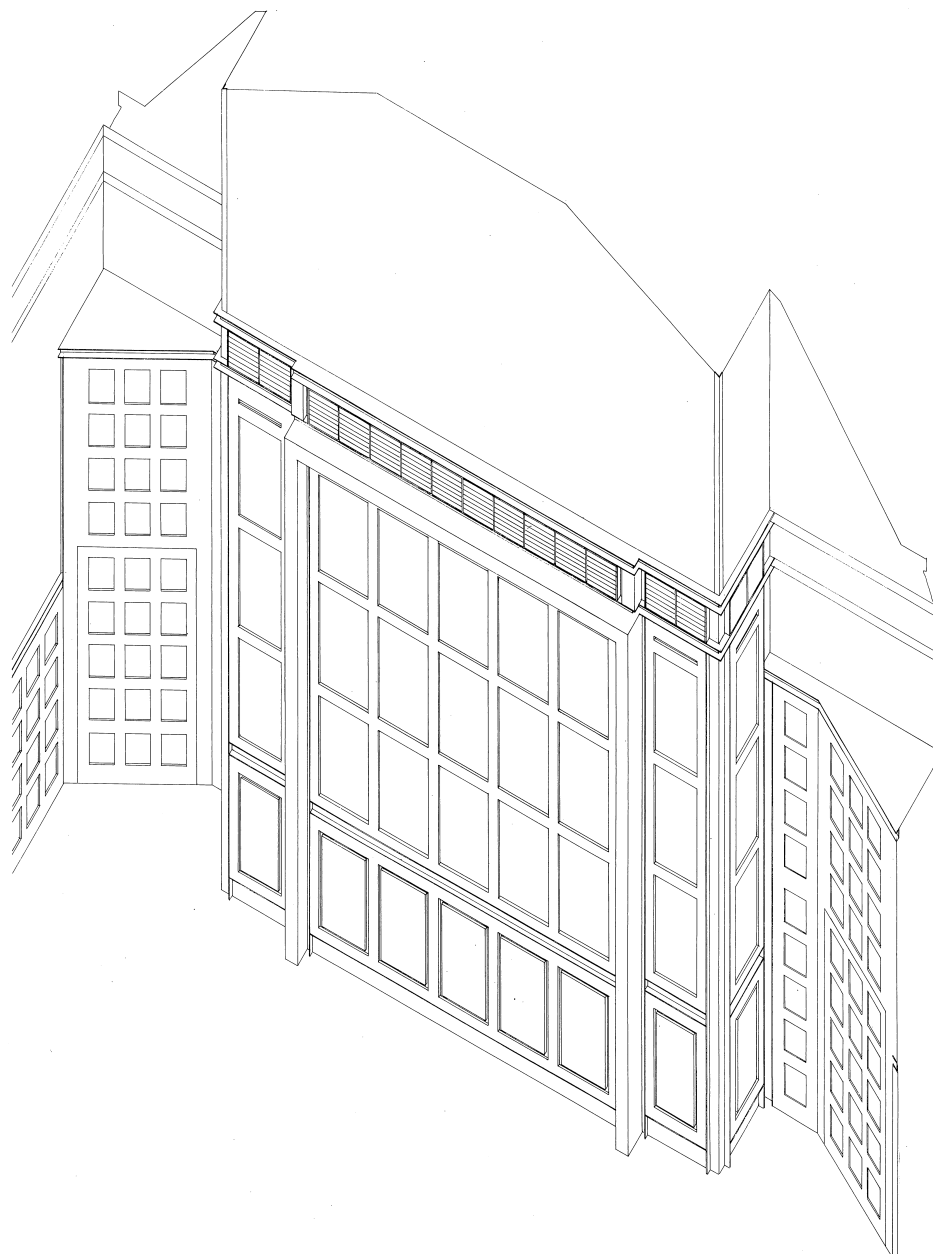
**QUANTITY SURVEYOR**  
Davis Langford & Everest:  
Martin Hall

**STRUCTURAL ENGINEER**  
Harris and Sutherland:  
Alan Wright, Bob Mansfield

**SERVICES ENGINEER**  
Building Services Design

**MAIN CONTRACTOR**  
Rattee and Kett

**SUBCONTRACTORS AND SUPPLIERS**  
mechanical installation Rule and Parker, electrical installation WIS, network Rowley Engineering, joinery BAICO, theatre lighting Theatre Direct, audiovisual equipment InSight Communications, seating Race Furniture, wallpaper Watts of Westminster



SARAH GLYNN

with Donald W Insall and Associates

CAIUS COLLEGE, CAMBRIDGE  
REFITTING A 19<sup>TH</sup> CENTURY AUDITORIUM

*Designed as a lecture theatre by Alfred Waterhouse, this had been used as a store. It was refitted in 1997*